



GMT MONTHLY MEMBERSHIP PROGRESS REPORT

Results as of: 5/31/2020

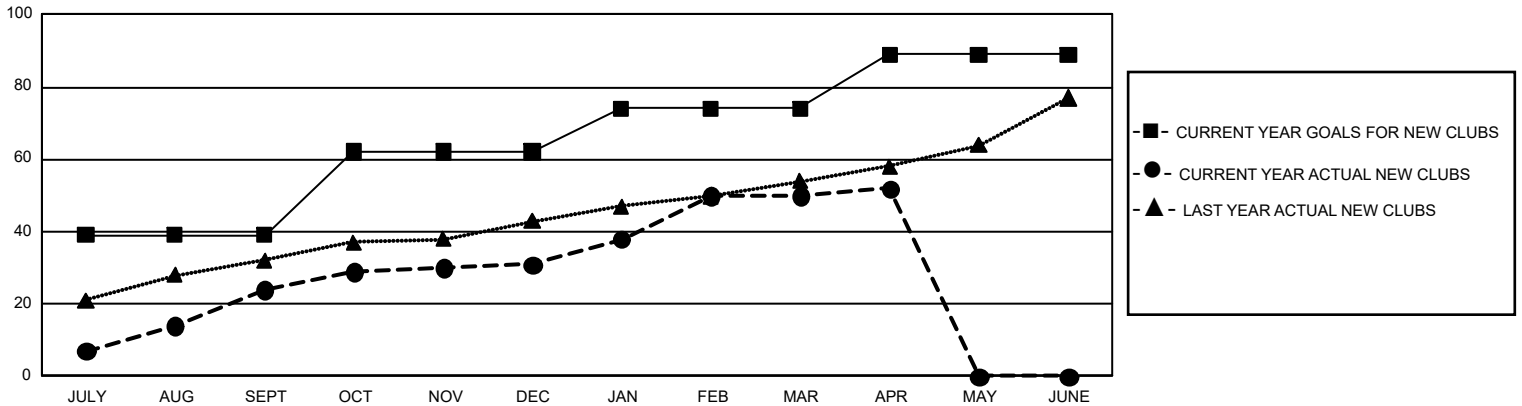
GMT Constitutional Area 6, Group J

GMT: OPEN

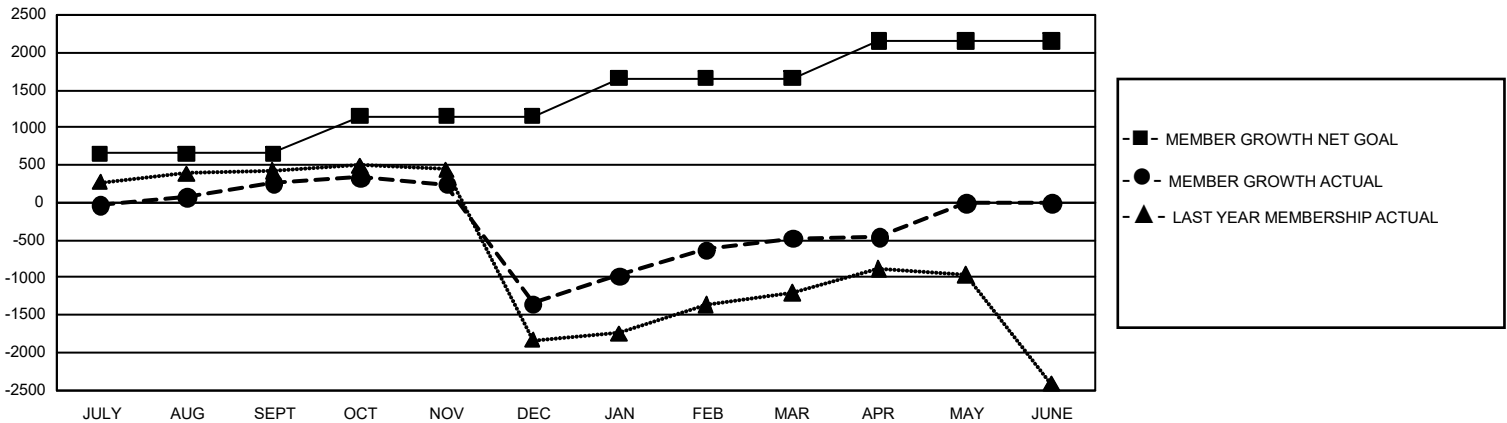
REPORT DOES NOT INCLUDE CLUBS IN UNDISTRICTED AREAS.

Clubs				Members			
RESULTS FOR 2019-2020				RESULTS FOR 2019-2020			
QUARTER	NEW CLUB GOAL	NEW CLUBS	DROPPED CLUBS	QUARTER	MEMBER GROWTH NET GOAL	MEMBER GROWTH ACTUAL	DROPPED MEMBERS ACTUAL (including transfers)
JULY/AUG/SEPT	117	24	3	JULY/AUG/SEPT	1,965	1,483	1,014
OCT/NOV/DEC	69	7	50	OCT/NOV/DEC	1,485	501	2,048
JAN/FEB/MAR	36	19	7	JAN/FEB/MAR	1,530	1,753	525
APR/MAY/JUNE	45	2	0	APR/MAY/JUNE	1,470	177	93

GOALS AND ACTUAL NEW CLUBS CUMULATIVE



GOALS AND ACTUAL MEMBERS CUMULATIVE



DROPPED CLUBS: 60	479 CLUBS OF 1,057 ADDED 1 OR MORE NEW MEMBERS	GENDER DISTRIBUTION MALE 22,291 (69.77%) FEMALE 9,659 (30.23%)
DROPPED MEMBERS DECEASED 64 CLUB CANCELLED 1,255 OTHER 2,360 <hr/> TOTAL 3,679	CLICK HERE FOR CUMULATIVE MEMBERSHIP DATA	TOTAL FAMILY UNIT MEMBERS 16,737 FAMILY MEMBERS PAYING HALF DUES 9,657